



CI/DI DOUBLE CHAMBER AIR VALVE

innovations with a "difference"

Specifications & feature:

The Double chamber Air Valve is a ductile iron air inlet-relief valve, which allows entrance and exit of air in the course of pipeline filling and emptying, therefore securing an undisturbed pipeline operation. Their function is to automatically release and admit air without operator assistance.

Elevated durability
Precise design
Reliable
100% Leak Tight Design.
Compact Design to Facilitate Installation.
Perfect designs
Exceptional finish
Fine built
Exact dimensions

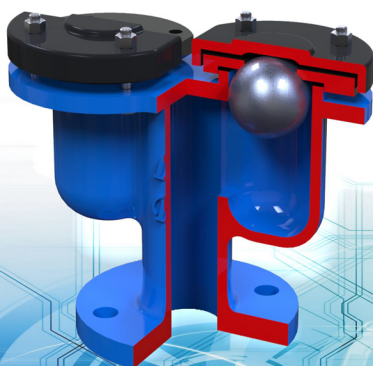
Functions:

The air valves with double chamber (relief and vacuum) are designed to perform three functions:

- 1- the relief of air on the start-up of the system while pipeline are filled.
- 2- the intake of air on shut - off of the system while pipeline are being drained.
- 3- the discharge of pressurized air pockets during the operation



ARTICLE NO. : LPV 1050



HYDRO TEST DETAIL

DN	40~200	
NOMINAL PRESSURE MPa	1.0 MPa	1.6 MPa
SHELL TEST MPa	1.5 MPa	2.4 MPa
SEAT TEST MPa	1.1 MPa	1.76 MPa
WORKING TEMPERATURE	20°C to 200°C	
MEDIUM	Water, Waste Water	
MATERIAL	Ductile Iron	
PNEUMATIC SEAT TEST	0.7 MPa	

WWW.LPVVALVES.COM

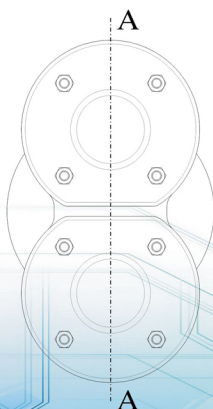
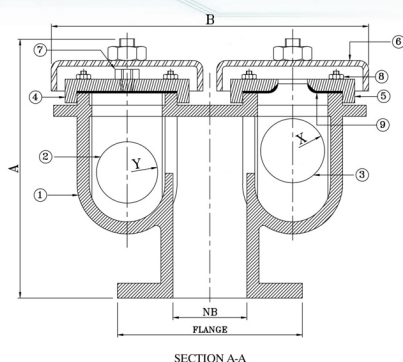


CI/DI DOUBLE CHAMBER AIR VALVE

innovations with a "difference"

Materials of Construction:

S.No.	PART NAME	Nos. Off	MATERIAL
1.	BODY	1	D.I.
2.	BALL	1	RUBBER WITH TIMBER CORE
3.	BALL	1	RUBBER WITH TIMBER CORE
4.	HP COVER	1	D.I.
5.	L.P COVER	1	D.I.
6.	COWL	2	D.I.
7.	H.P ORIFICE PLUG	2	LEADED TIN BRONZE
8.	BOLTS & NUTS	8	C.S.
9.	GASKET	2	RUBBER



Size/ Dimensions

Inches	mm	A(Max.)	B(Max.)	X(Max.)	Y(Max.)
1½"	40	230	330	63.5	76
2"	50	254	375	76	98
3"	80	260	444	98	98
4"	100	330	527	127	127
6"	150	485	654	203	127
8"	200	585	805	254	139



WWW.LPVVALVES.COM

ARTICLE NO. : LPV 1050