



innovations with a "difference "

# I.C. BALL VALVE SCREWED ENDS

## Specifications & feature:

100% Leak Tight Design.  
Compact Design to Facilitate Installation.

## Applications:

Paper & Pulp Industry, Waste & effluent Treatment Plants, Water Treatment, Chemical & Sugar Industry, Fire fighting, Drilling Rig, Heating & Air Conditioning, Cooling Water Circulation, Compressed Air, Civil Constructions & numerous other applications.

Design standard: IS-13095, BS-5155



ARTICLE NO. : LPV 1043



## HYDRO TEST DETAIL

DN	15~50	
NOMINAL PRESSURE MPa	1.0 MPa	1.6 MPa
SHELL TEST MPa	1.5 MPa	2.4 MPa
SEAT TEST MPa	1.1 MPa	1.76 MPa
WORKING TEMPERATURE	<80 °C	
MEDIUM	Water, Waste Water	

WWW.LPVALVES.COM

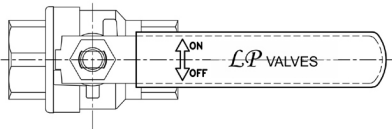
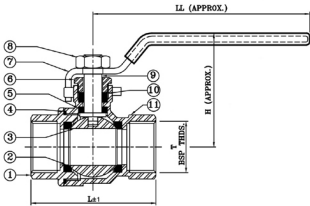


innovations with a "difference "

# I.C. BALL VALVE SCREWED ENDS

## Materials of Construction:

S.No.	PART NAME	Nos. Off	MATERIAL
1.	CONNECTOR	1	C.S.S.
2.	SEAT RING	2	PTFE
3.	BALL	1	S.S. 304S.S.316
4.	SIDE GASKET	1	PTFE
5.	STEM SEAL	1	PTFE
6.	GLAND NUT	1	S.S.
7.	LEVER	1	S.S. SHEET
8.	NUT	1	S.S.
9.	STEM	1	S.S. 304S.S.316
10.	GLAND PACKING	1	PTFE
11.	BODY	1	C.S.S.



## Size/ Dimensions

Inches	mm	L±1	H	LL
½	15	55.5	50.5	102
¾	20	64.5	58.5	112
1	25	76	62.5	124
1¼	32	88	86.5	171
1½	40	96	92	188
2"	50	111	101	198

WWW.LPVALVES.COM

ARTICLE NO. : LPV 1043